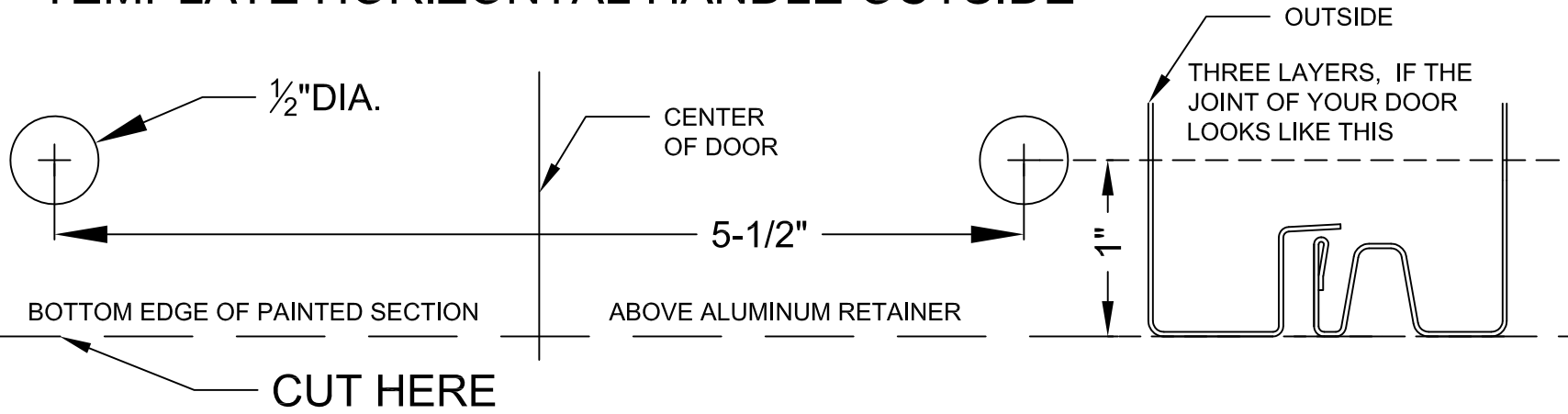
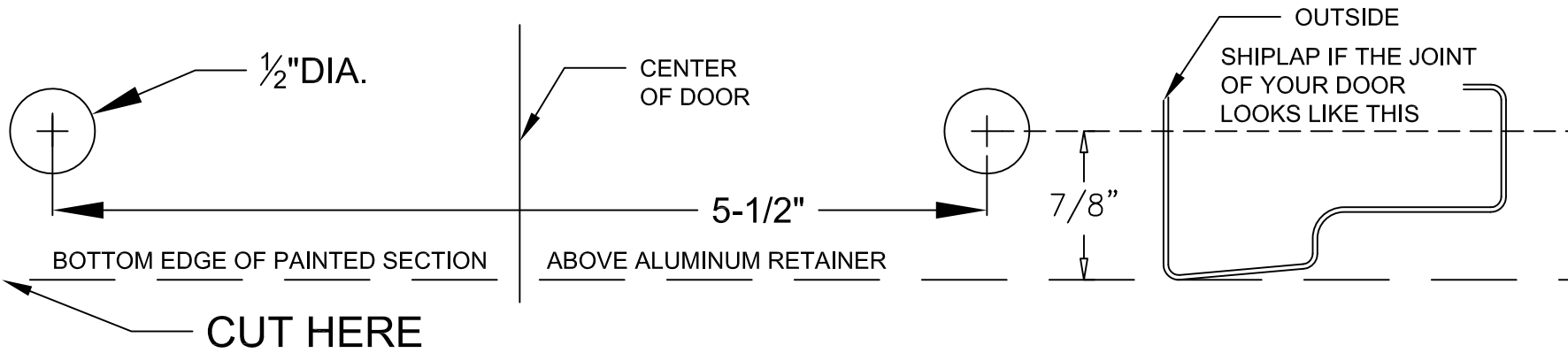


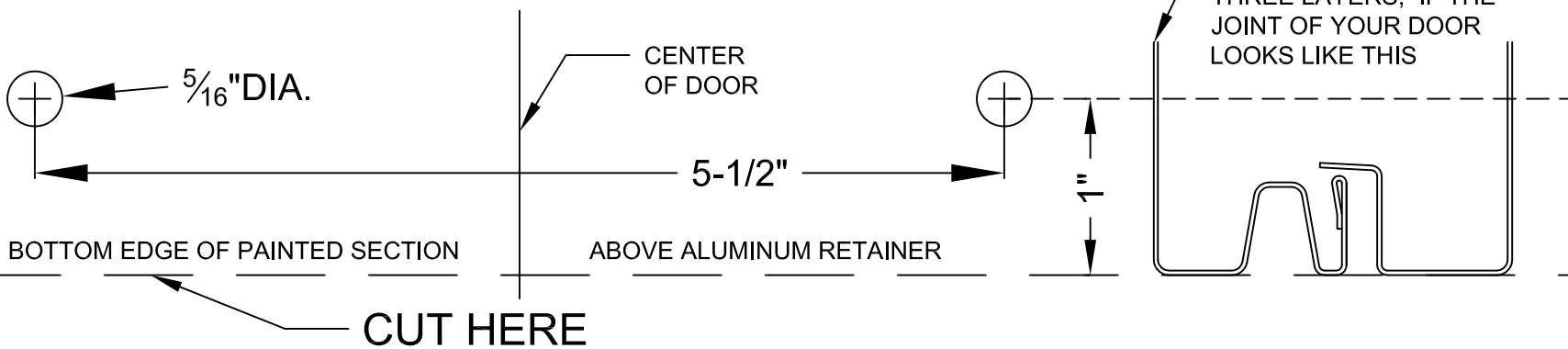
**FIG T1- FOR THREE LAYER DOORS  
TEMPLATE HORIZONTAL HANDLE OUTSIDE**



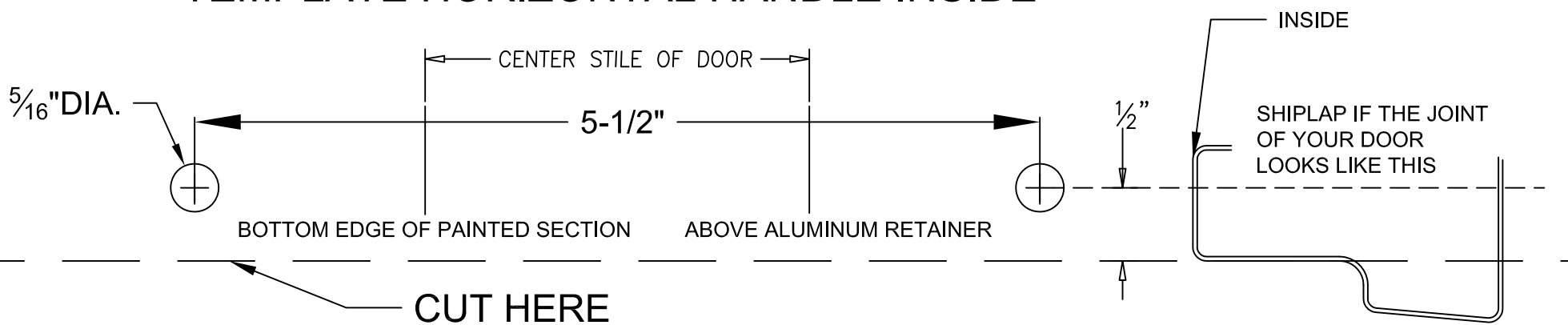
**FIG T1- FOR TWO LAYER SHIPLAP JOINTS  
TEMPLATE HORIZONTAL HANDLE OUTSIDE**



**FIG T2- FOR THREE LAYER DOORS  
TEMPLATE HORIZONTAL HANDLE INSIDE**



**FIG T2- FOR ONE & TWO LAYER SHIPLAP JOINTS  
TEMPLATE HORIZONTAL HANDLE INSIDE**



**FIG T3- FOR SINGLE VERTICAL LIFT HANDLE**

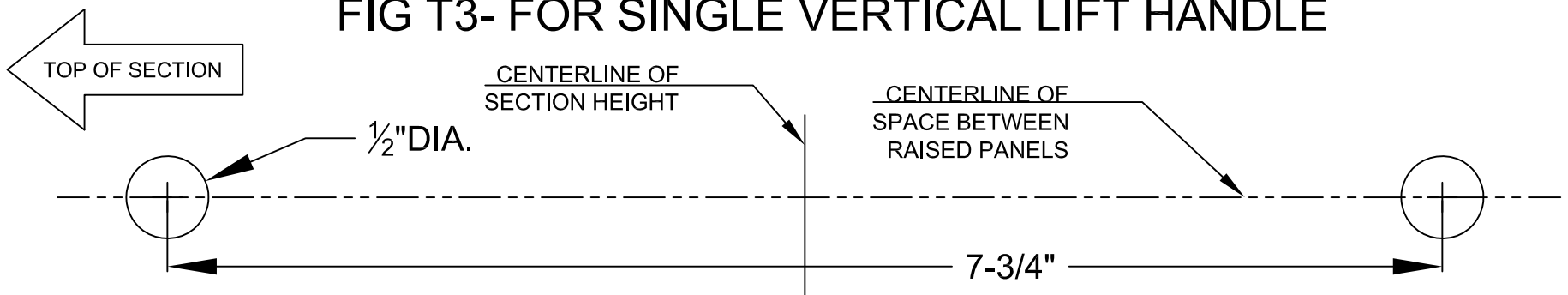
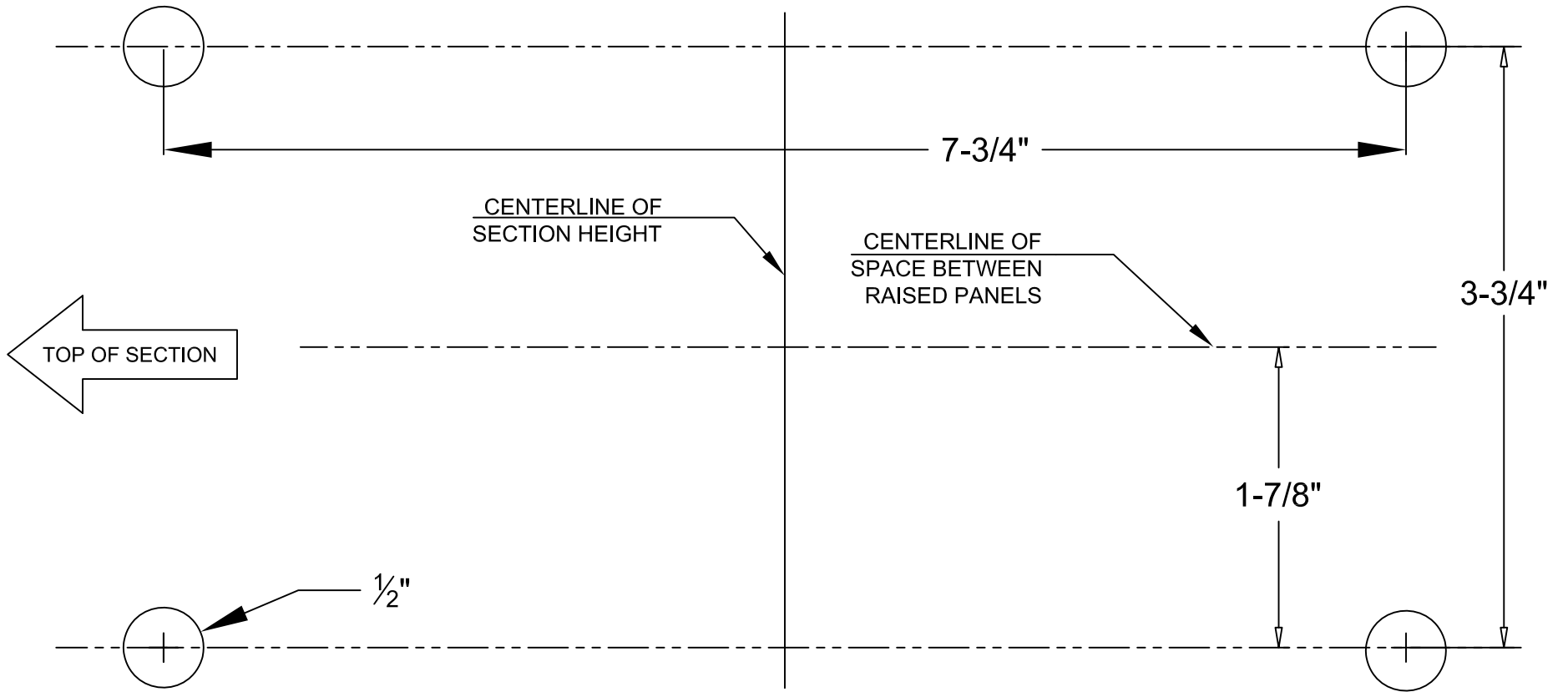
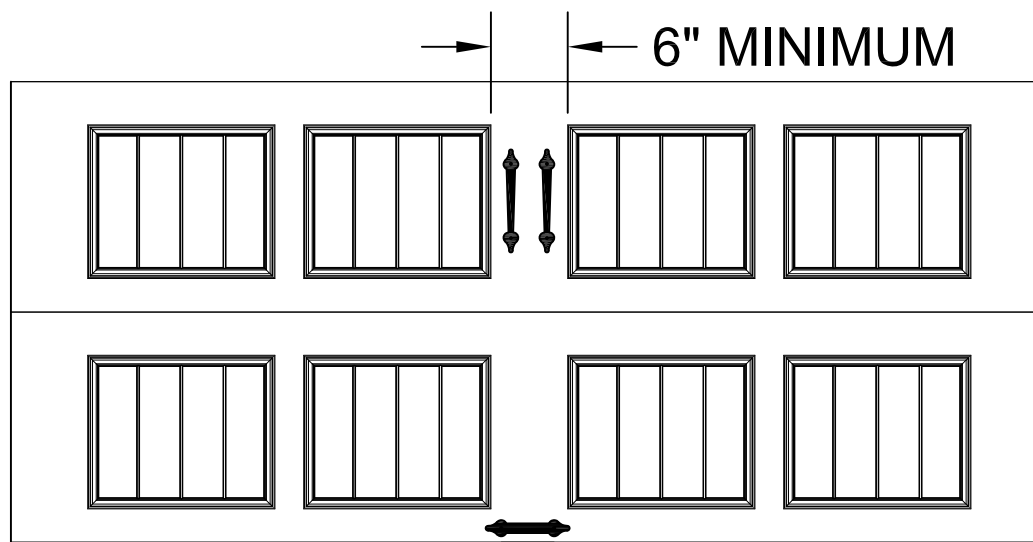


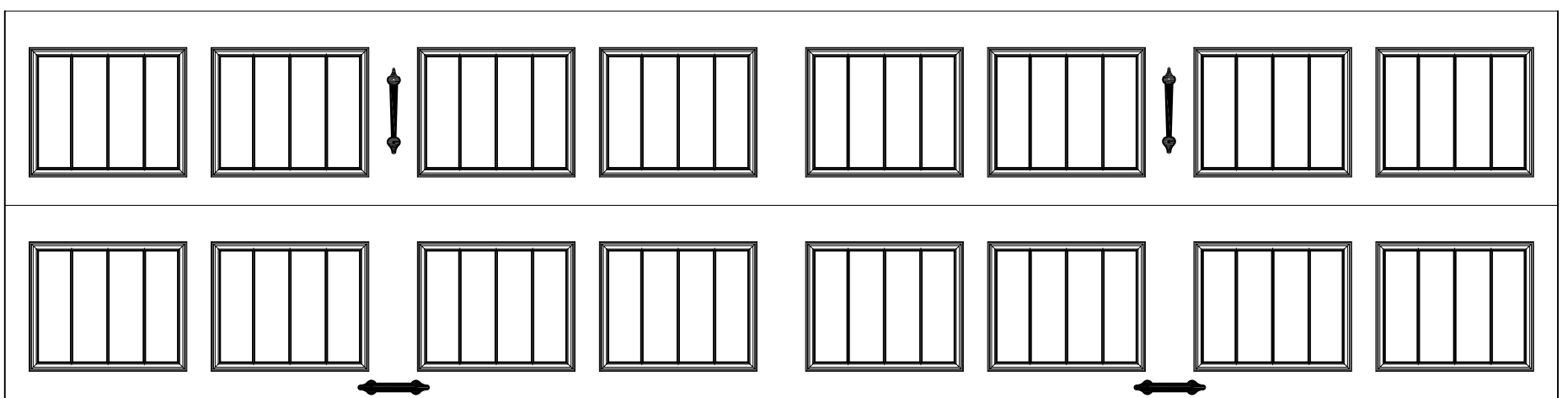
FIG T3- TEMPLATE FOR TWO HANDLE SET



GALLERY SINGLE WIDE DOOR UP TO 9' WIDE. MINIMUM WIDTH 6" BETWEEN RAISED PANELS FOR TWO HANDLES



GALLERY DOUBLE WIDE DOOR WITH SINGLE HANDLES AND SPACING BETWEEN PANELS OF LESS THAN 6 INCHES



GALLERY DOUBLE WIDE DOOR WITH TWO HANDLE SETS. CUSTOMER TO PURCHASE ADDITIONAL VERTICAL & HORIZONTAL HANDLE KIT

